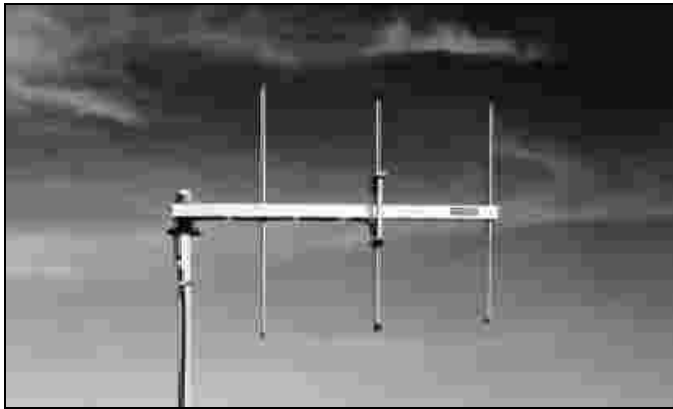


## Antennas

### General Description

The antennas listed below are extremely rugged and are fabricated of light weight, high strength aluminum alloys. All the antennas listed are designed to survive 100 mph winds.

The Model 5050ANT Omni Directional Antenna is standard equipment in the HydroLynx packaged gauges except for the Model 50386P Packaged Repeater which requires a high gain antenna. High gain omni antennas are recommended for the central site and repeater receive antennas. Directional antennas may be used as receive antennas in some situations. However, the horizontal band width must be considered during radio path studies to ensure consistent reception.



Model DB230 Directional Antenna

## Antenna Mounting Brackets

The DB224, DB408 and DB420 Antennas are supplied with clamps for top mounting. If top mounting is not feasible, heavy duty side mount kits are available that include all brackets, clamps and hardware to mount the antenna to a tower leg.

### Ordering Information

DB5001 ..... Side Mount Kit for DB224  
 DB5012 ..... Side Mount Kit for DB408 and DB420  
 DB365W ..... Wall or Wooden Pole Mounting Bracket



Model DB224 receive and model SAM-160 transmit antennas

### Ordering Information

Model No.	Type	Gain	Length	Width	Horiz. Beam Width	Mounting Brackets	Connector
5050ANT	Omni (VHF or UHF)	0 dB	2 ft.	3 ft.	360 Degrees	U-Bolt to 1 5/8 in.	UHF(F)
5050A	Omni (VHF or UHF)	3 dB	2 ft.	3 ft.	360 Degrees	U-Bolt to 1 5/8 in.	UHF(F)
5050MBX-150	VHF-OMNI	3 dB	9.2 ft.	7.2 in.	360 Degrees	Mounting clamps	UHF(F)
DB224	VHF-OMNI	6 dB	20 ft.	1.5 ft.	360 Degrees	Bracket for 2 1/2 in. top*	N(M)
DB230	VHF-DIR	7 dB	3.5 ft.	3 ft.	76 Degrees	Bracket for 2 in. pipe	N(M)
DB408	UHF-OMNI	6.6 dB	9.5 ft.	1.5 ft.	360 Degrees	Bracket for 2 1/2 in. top*	N(M)
DB420	UHF-OMNI	9.5 dB	18 ft.	1.5 ft.	360 Degrees	Bracket for 2 1/2 in. top*	N(M)
DB436	UHF-DIR	10 dB	3 ft.	2 ft.	40 Degrees	Bracket for up to 3 in. pipe	N(M)
SAM-160	VHF-DIR	10 dB	4.5 ft.	2.5 ft.	60 Degrees	Bracket for 1 1/4 in. mast	N(F)

Note that lengths and widths are approximate. \* Indicates side mounting available.